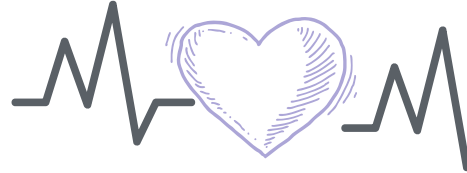


Newsletter

HIGH BLOOD PRESSURE

Compiled by: Lancet Laboratories



What Is Blood Pressure ?

Blood pressure is the force of blood pushing against the walls of your arteries as your heart pumps blood through them.

The narrower an artery, the greater the force needed to push the blood through it.

Blood pressure is measured with a cuff your health care worker places around your arm. The pressure reading is given as two values e.g. 120/80. The higher value is referred to as the systolic pressure (when the heart beats), the lower value as the diastolic pressure (when the heart rests between beats).

What Is High Blood Pressure ?

High blood pressure (or hypertension) refers to bloodpressure that is high enough to damage the blood vessels and organs in the body, eventually leading to health problems such as heart disease.

What Causes High Blood Pressure?

There are two types of high blood pressure:

1. Primary (essential) hypertension:

This is the common type of high blood pressure. The cause of primary hypertension is not clear. It affects adults and usually develops gradually over many years.

2. Secondary hypertension:

This is high blood pressure for which there is an identifiable cause. It tends to appear suddenly, causing very high blood pressure readings.

Causes include:

- Kidney problems
- Tumours of the Adrenal glands
- Abnormalities of the blood vessels that some people are born with (congenital)
- Certain medication
- Type of recreational drugs, e.g. Cocaine and Amphetamines

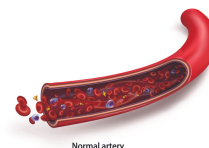


How Can My Hypertension Be Managed?

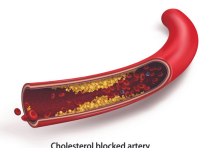


What are the symptoms of High Blood Pressure ?

Most people with high blood pressure do not have any symptoms until they start to develop complications. Some people may have headaches or dizziness. For this reason you should have your blood pressure checked regularly, at least once a year.



Normal artery



Cholesterol blocked artery






The following lifestyle changes are important:

1. Decrease the amount of salt in your diet
2. Maintain a healthy weight
3. Increase physical activity
4. Limit Alcohol
5. Don't smoke
6. Manage stress
7. Monitor your blood pressure
8. Find time to relax

What are the long-term effects of Hypertension?

The higher your blood pressure and the longer it is uncontrolled, the greater the damage to your body.

Long-term effects include:

-  Heart attack or stroke:
 - High blood pressure leads to hardening and thickening of the arteries to the brain and heart. With time the blood vessels may become blocked or may burst, affecting the oxygen supply to the heart muscle or a part of the brain.
-  Aneurysm:
 - An aneurysm refers to a bulge through a weakness in the wall of an Artery. If the aneurysm bursts, it can be fatal.
-  Heart failure:
 - Pumping against increased pressure causes the heart muscle to thicken. With time, it becomes more and more difficult for the thickened muscle to pump adequately.
-  Kidney failure:
 - Thickening and narrowing of the blood vessels to the kidney eventually prevents it from functioning properly.
-  Loss of vision:
 - This is due to damage to the blood vessels going to the eye.

What are some of the risk factors for developing high blood pressure?

1. Age:
The risk increases with age.
2. Race:
It is common among black people.
3. Family history:
High blood pressure tends to run in families.
4. Using Tobacco:
Smoking or chewing tobacco raises your blood pressure and the chemicals damage the lining of your Artery walls. This can cause your arteries to narrow, increasing your blood pressure. Second-hand smoke also can increase your blood pressure.
5. Being overweight:
As you gain weight, the body uses more blood to transport oxygen and nutrients to your organs, muscles and other tissue. The added volume of blood creates even more pressure within your Arteries.
6. Lack of exercise:
Inactivity increases your heart rate, making it work harder and increasing the force of blood flow.
7. Adjust eating habits
Too much salt (sodium) can cause your body to retain fluid, which increases blood pressure.
Too little potassium in your diet
Potassium helps to balance the amount of sodium in your cells.
8. Drinking too much alcohol:
Over time, heavy drinking can damage your heart. Having more than two drinks a day can raise your blood pressure.
9. Stress:
High levels of stress can lead to a temporary increase in blood pressure.
10. Certain chronic conditions:
These include high cholesterol, diabetes, kidney disease and sleep apnoea. Some women can develop high blood pressure during pregnancy.



What are the symptoms of high blood pressure?

Most people with high blood pressure do not have any symptoms until they start to develop complications. Some people may have headaches or dizziness. For this reason you should have your blood pressure checked regularly, at least once a year.